

High Security Seal · Data Sheet

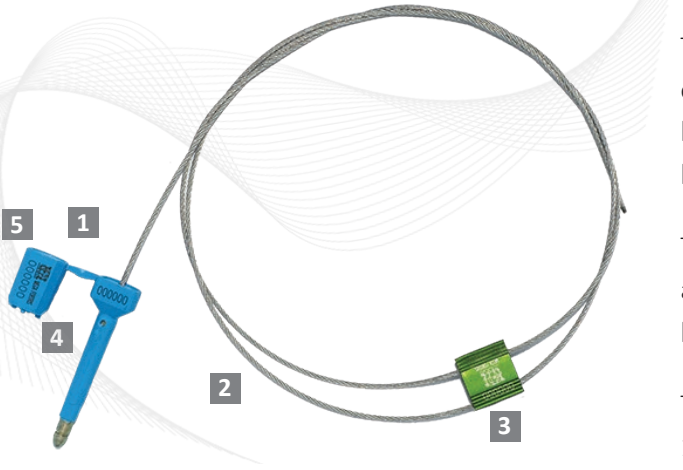
# Mega Lock

## Double Security Barrier Seal

The Mega Lock provides the proven security features and strength of the Cable Lock seal (MCL250) and the Klicker bolt seal or i-Klic bolt seal. These seals are used individually worldwide to protect high valuable goods during transport in containers and trucks.

The Mega Lock boasts a combination of solid materials: rust-proof aluminium body, a strong steel cable combined with a mild steel bolt and barrel moulded with high-impact ABS.

The Mega Lock consists of a seal which complies to the ISO/DIS 17712.2 . For further details, please see the description of the Klicker seal, the i-Klic seal and the Cable Lock (MCL250) seal.



### Features

- 1** The 2 self-locking mechanisms are easily locked by hand.
- 2** The Mega Lock can only be removed by a strong cutter. It takes two cuts to open the Mega Lock seal.
- 3** The Mega Lock can be colour-coded to suit individual requirements. The cable locking body can be anodized in 5 standard colours and the bolt seal is moulded with high-impact ABS in a range of 5 different colours.
- 4** Customized marking is etched on the two locking bodies with permanent laser marking, and text, logos, serial numbers and barcodes can be marked on all three parts of the seal if required.
- 5** The Mega Lock is also known as the “synergy seal”. The solid combination of two proven barrier seals provides higher security than when the seals are used separately – it is greater than the sum of its parts.

### Technical Specifications

#### PRODUCT

Product Code	Material	Locking Length	Tensile Strength	Diameter	Marking Area	Max Marking Digits
ML250_110KLC_50 ML250_110IKL_50	<b>Body:</b> Aluminium, ABS-coated bolt seal <b>Cable:</b> Mild steel wire	1120.0 mm (std) or customised	1800 kg	<b>Cable:</b> Ø 2.4 mm <b>Bolt:</b> Ø 9.0 mm	<b>Body:</b> 20.0 x 20.0 mm <b>Pin:</b> 7.0 x 16.0 mm <b>Bush:</b> 10.0 x 24.0 mm	10

#### OUTER CARTON

Carton Quantity	Dimensions	Weight kg/carton	Volume m <sup>3</sup> /carton	Standard Colours
-----------------	------------	------------------	-------------------------------	------------------

Carton size/ weight will vary according to customised cable lengths. Please contact us for details.



**FMM EXCELLENCE AWARD 2012**  
QUEST FOR CONTINUOUS IMPROVEMENT  
BEST MANUFACTURER IN MALAYSIA IN 2012