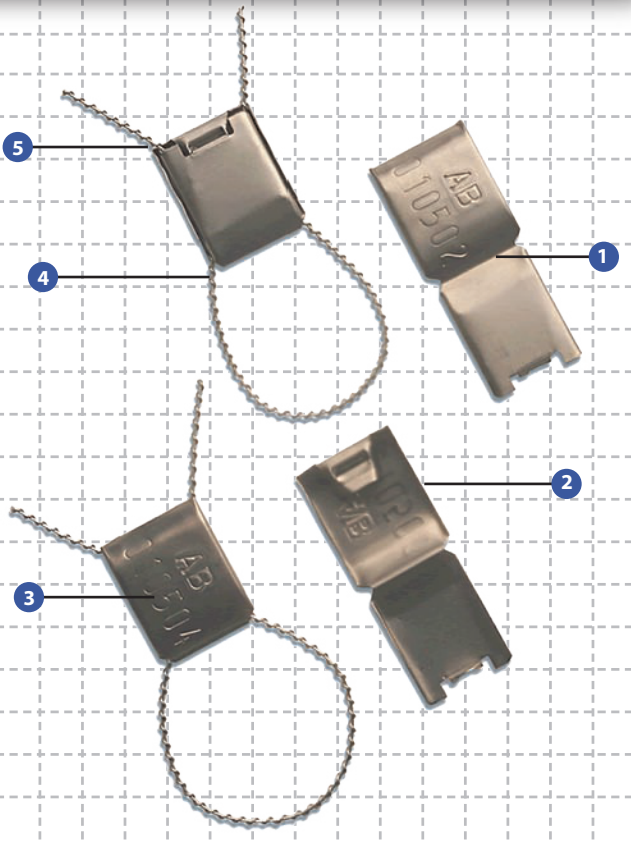


Metal Clip Seal

PREVENTION. PROTECTION. PEACE OF MIND.

security seal



A highly versatile & low cost metal seal

- 1 The Metal Clip Seal is designed with several breaking points. If the seal is tampered with and opened, the breaking point is broken and the seal cannot be applied again.
- 2 The seal can be supplied with or without wire. Wires are supplied in customized lengths or in rolls.
- 3 All Metal Clip Seals can be embossed with customized marking e.g. logo and sequential serial numbers.
- 4 The seal is easily applied without the use of any tools. A cutter is required to remove the seal.
- 5 The Metal Clip seal can be utilized with a variety of wire materials depending on the application. Full metal or a combination of nylon and metal is most commonly used. The most suitable wire diameter is 1.1mm.

Specifications

Product	Material	Locking Length	Cable Diameter	Pull Strength	Marking Area	Marking Digits	
Metal Clip	Flexible bright mild steel	Customisable	1.15 mm	-	Embossed H 15 x W 30 mm	Max 7	
INNER CARTON Quantity	Dimensions mm	Weight kg/carton	Volume m ³ /carton	OUTER CARTON Quantity	Dimensions mm	Weight kg/carton	Volume m ³ /carton
1,000	470 x 240 x 60	2.32	0.0071			Depends on qty ordered	

Description

This metal clip seal is manufactured in a way that makes it highly tamper evident. If the seal is opened, it will break, and cannot be re-sealed.

Typical applications of the MegaFortris Metal Clip seal include: coin boxes e.g. in the telecommunication industry, mail sacks, cement bags, drum closures, utility meters, small fastenings in general.

The seal is also very useful where several openings next

to each other must be sealed. The wire can be cut to any required length and can be run through a series of openings before sealing with a single Clip Seal.

To effectively secure the seal, ensure the wire is twisted at least twice or tied in a simple knot prior to locking the Clip Seal.

Be assured of better security with our innovative use of materials and industrial design.

